

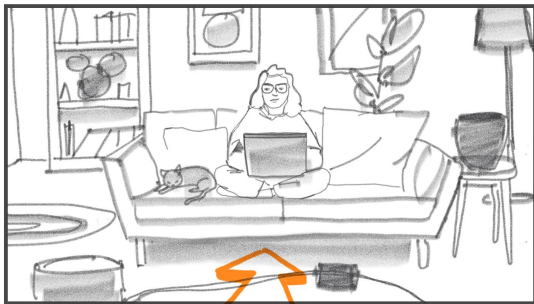
# Storyboard

CYBERSECURITY

---



1

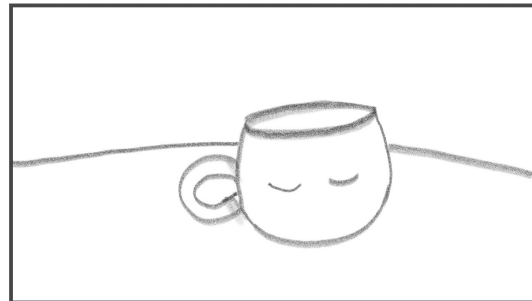


Sometimes, it's  
when we are most  
relaxed / **V**

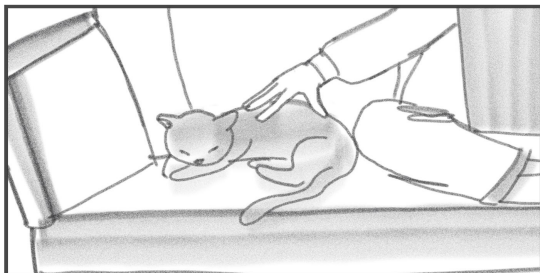
LARGE SHOT / INT DAY:

Travelling forward towards a woman sitting on her  
couch browsing the internet. **SPLINE**

2



3

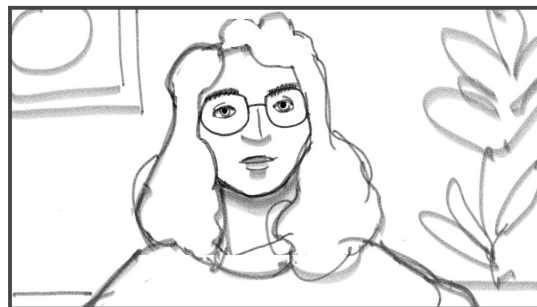


at Home,  
/ **V**

MEDIUM SHOT / INT DAY :

She caresses her cat that's quietly sitting next to  
her.

4

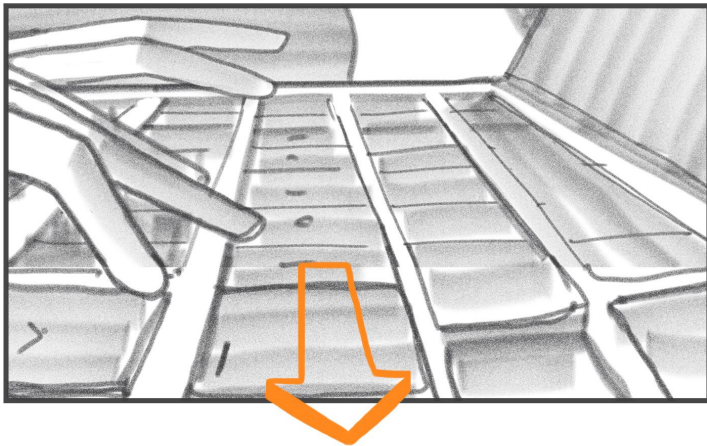


in front of our  
screens...

CLOSE SHOT / DAY INT:

Light front travelling ( POV of the screen/ passes  
through it ) on the face of the heroine still  
navigating.



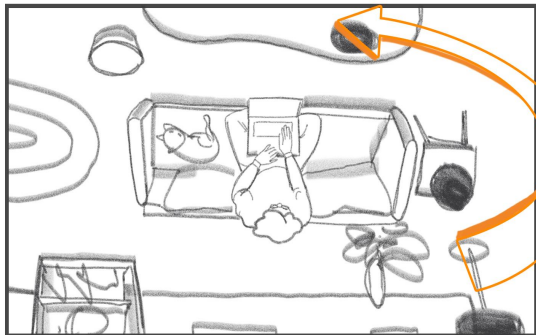


That we are  
actually most  
at risk

MACRO SHOT / INT DAY :  
Travelling backwards on the keyboard where she  
types text. **SPLINE**



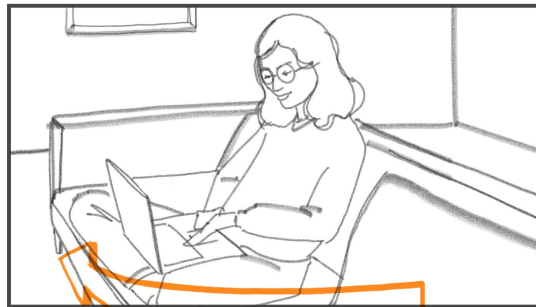
6



LARGE SHOT / INT DAY :  
Camera movement via slider where we start in middle top shot on the couch. Objects around her begin to disappear. **SPLINE**

Today, data theft and cyber attacks  
/ **V**

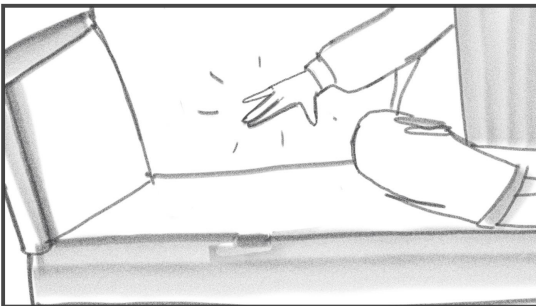
7



have become more sophisticated  
/ **V**

LARGE SHOT / INT DAY:  
We make several movements via the slider on her in  $\frac{3}{4}$  view. All the objects around her have disappeared. **SPLINE**

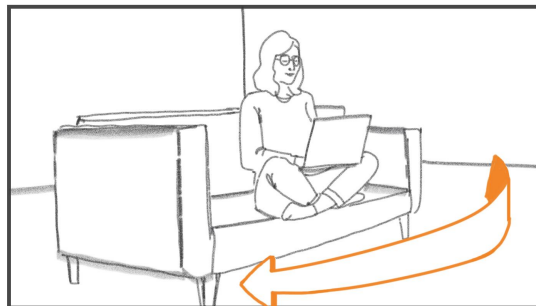
9



CLOSE SHOT / DAY INT:  
The mvt end on the sofa. She tries to pet her cat which also disappeared. **SPLINE**

Sometimes with severe consequences,  
/ **V**

8

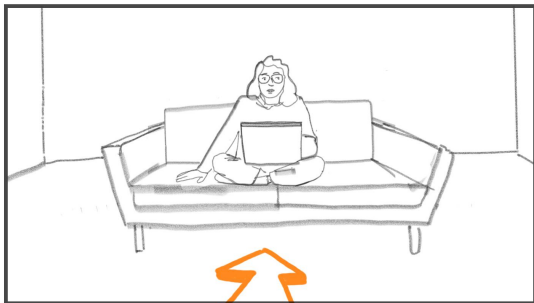


And more frequent.  
/ **V**

LARGE SHOT / INT DAY:  
**SPLINE**



10

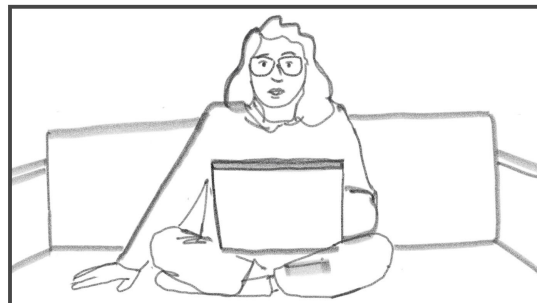


MEDIUM SHOT / INT DAY :

Beginning of the camera movement (vertigo effect) on our heroine who understands that she had her data stolen. **SPLINE**

So how do you  
react,  
/ **V**

11



when you've  
become a  
victim of  
identity theft or  
cybercrime ?  
/ **V**

CLOSE SHOT / DAY INT:

End of the camera movement (vertigo effect) on our heroine who understands that she had her data stolen. **SPLINE**

12



MACRO SHOT / INT DAY :

Cut to her eyes with the reflection of the screen. Big stress.

What can you  
do?

13



MEDIUM SHOT / INT DAY :

Horizontal travelling, she frantically types on her computer to try to solve the situation.

We go behind her shoulder. **SPLINE** / **V**



14

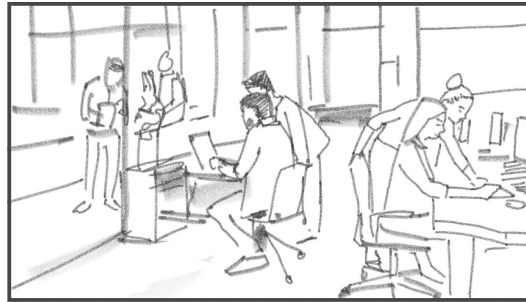


Having Iris Powered  
by Generali's  
identity

MEDIUM SHOT / INT DAY :

Horizontal travelling we find ourselves at Europ Assistance where an expert has detected maliciousness via his computer.

15



and cyber  
protection  
services,

LARGE SHOT OF OFFICE / INT DAY

Wide shot of the room with the operator in the foreground.

We realize the size of the cell.

16



means  
24/7/365  
assistance

SPLITSCREEN / INT DAY :

The operator speaks with our heroine.  
Face to face.

17



Expert support  
to help repair  
any damage

MEDIUM SHOT WITH TRAVELLING / INT DAY :

The operator walks down the hall with a colleague.  
She explains to him the problem with a tablet



18

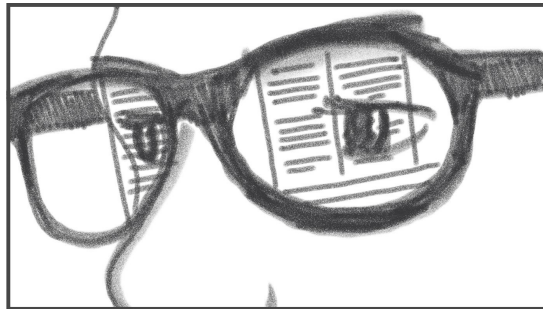


and take actions  
to reduce future  
risk.

MEDIUM SHOT / INT DAY :

A work meeting where we see people working  
together

19

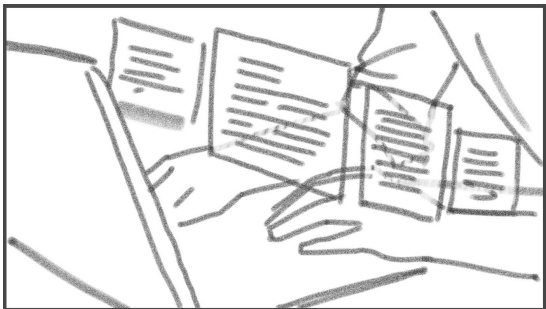


virus removal,  
correction of  
personal and  
financial  
information,

CLOSE SHOT / INT DAY :

We see in the glasses of the operator information  
on his computer.

20



data recovery,  
and  
more...

CLOSE SHOT / INT DAY :

The fingers tap on the keyboard, we see the  
information displayed above.

21



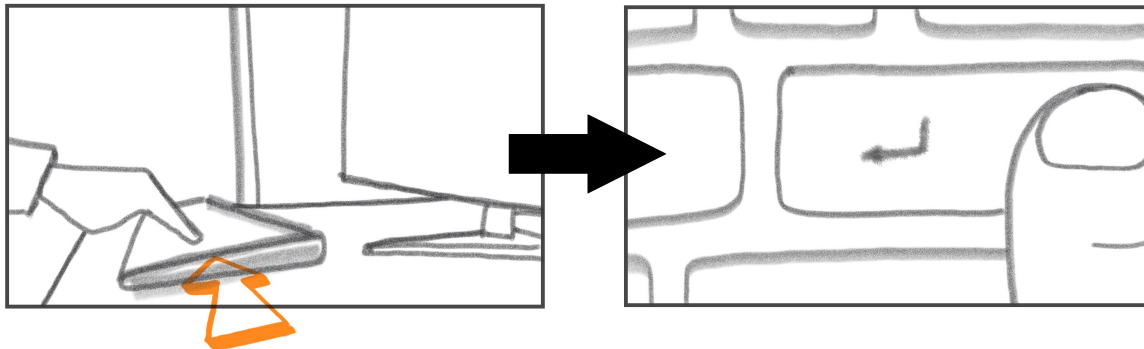
Whatever the  
need, an Iris  
expert can  
intervene for  
you

MEDIUM SHOT / INT DAY :

The operator is in front of her screen to solve the  
problem.



22

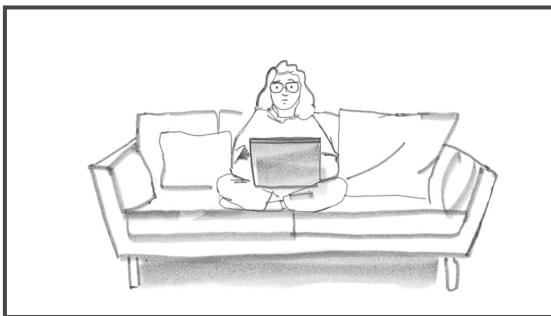


And even take  
control of your  
device

CLOSE SHOT / DAY INT:

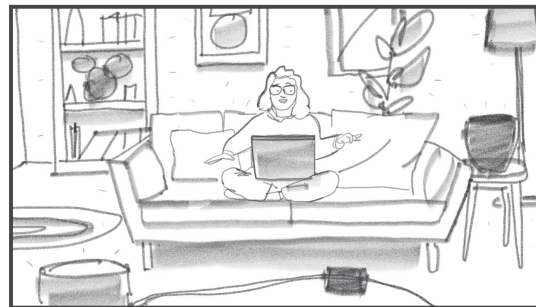
Front Travelling on the operator's finger pressing the keyboard enter key, which resolves the issue.  
Transition on button press from the operator to the victim.

23



LARGE SHOT / INT DAY:

We are back at our heroine place, who will see all her objects come back at once.



LARGE SHOT / INT DAY:

Everything came back except the cat.

to help resolve the  
problem







and protect  
everything you  
love.

LARGE SHOT / INT DAY:  
The cat reappears 1s later.